

Kanardia

Flying with attitude *since 2006.*



AIRCRAFT INSTRUMENTS

Edition 2020



Kanardia

Flying with attitude *since 2006.*

Kanardia is developing and producing high performance avionics for ultralight aeroplanes, helicopters and autogyros.

The most important features of all our instruments are an intuitive, easy to use interface, lightweight design, reliable and fast hardware for competitive prices.





Indu

02



Digi EMS

04



Customizer app

05



Horis

06



Emsis

08



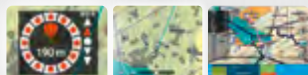
Aetos

10



Nesis

12



Nesis: Traffic, Maps and Flight planning

15



Additional hardware accessories

18



Accessories

20



INDU80

round instruments. A big diverse family of 57 and 80 mm gauges with ability to personalise scales and LCD displays.



390 €

AIRSPEED INDICATOR 80

weight 210 g
size 82 x 82 x 45 mm
power 105 mA



390 €

ALTIMETER 80

weight 240 g
size 82 x 82 x 55 mm
power 120 mA

With integrated
backup battery
for **490 €**



390 €

VERTICAL SPEED INDICATOR 80

weight 210 g
size 82 x 82 x 45 mm
power 105 mA



490 €

COMBO 80

weight 210 g
size 82 x 82 x 45 mm
power 105 mA



390 €

G-METER 80

weight 210 g
size 82 x 82 x 45 mm
power 105 mA



290 €

TACHOMETER 80

weight 200 g
size 82 x 82 x 45 mm
power 105 mA



All instruments
are also available
as slaves for 270 €
in 57 or 80 mm
size.



390 €

VERTICAL SPEED INDICATOR 57

weight 160 g
size 62 x 62 x 45 mm
power 102 mA



390 €

ALTIMETER 57

weight 180 g
size 62 x 62 x 45 mm
power 110 mA



390 €

AIRSPEED INDICATOR 57

weight 160 g
size 62 x 62 x 45 mm
power 102 mA



290 €

TACHOMETER 57

weight 150 g
size 62 x 62 x 45 mm
power 102 mA



390 €

G-METER 57

weight 160 g
size 62 x 62 x 45 mm
power 105 mA



490 €

COMBO 57

weight 200 g
size 62 x 62 x 45 mm
power 110 mA



DIGI EMS

The lightest and the most compact engine monitoring system (EMS) on the market.



DIGI slave
for only
500 €

930 €

DIGI EMS kit

weight **140 g**
size **117 x 71 x 17 mm**
power **170 mA**

The kit consists of:

- Digi display
- EMS unit (Daqu / mini Daqu)
- cables



mini DAQU EMS unit

weight **82 g**
size **75 x 45 x 30 mm**
power **95 mA**

For engines with ECU (see page 19).



DAQU EMS unit

weight **135 g**
size **125 x 80 x 20 mm**
power **102 mA**

For all engines, up to 6 cylinders.



75 €

BLU Bluetooth - CAN interface

weight **7 g**
size **14 x 10 x 54 mm**
power **25 mA**

A necessity which allows you to update and configure Kanardia instruments.

CUSTOMIZER APP

Design your own DIGI layout.

BRAND NEW

Download
free app from
Kanardia
web site.*



Design your layout
with Customizer app,
available from
Kanardia web site.



Transfer the layout
to Android device.



Enjoy
your layout.

Use BLU Bluetooth - CAN interface
(see page 4) and Kanja Android app
to copy the layout to Digi.

* Available from April 2020.



HORIS

is a state-of-the-art AD-AHRS unit suitable for installation on standard aviation openings.



990 €

HORIS 80 kit

weight 250 g
size 82 x 82 x 45 mm
power 275 mA



200 €

UPS-L

weight 176 g
size 81 x 47 x 32 mm

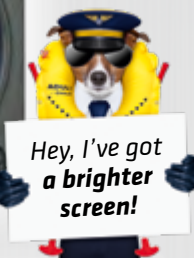
Adds battery backup to your Horis.



990 €

HORIS 57 kit

weight 180 g
size 62 x 62 x 45 mm
power 140 mA



450 €

MAGU

weight 57 g
size 62 x 62 x 23 mm
power 25 mA

Adds wind indication and true heading.
Nose/tail install available.

BEST SELLER

The kit consists of:

- Horis 80 or 57
- built-in AD-AHRS-GPS module
- cables, GPS antenna and OAT sensor on cable

Features:

- sunlight readable display
- low power consumption
- compact design
- multi screen
- stable attitude during sustained turns (suitable for gliders)
- GNSS constellation view
- NMEA output

HORIS

www.kanardia.eu



HORIS



590 €

HORIS 80 *slave*

weight 230 g
size 82 x 82x 45 mm
power 250 mA



590 €

HORIS 57 *slave*

weight 156 g
size 62 x 62x 45 mm
power 100 mA



PFD screen



DI screen



G-metre screen



Chrono screen





EMSIS 80

is a simple and proven instrument used as **PFD (primary flight display)** or as **EMS (engine monitoring system)** that fits into standard 80 mm hole.



1090 €

EMSIS 80 PFD kit

weight **298 g**
size **82 x 82 x 65 mm**
power **150 mA**

The kit consists of:

- Emsis 80
- built-in AD-AHRS-GPS module
- cables, GPS antenna and OAT sensor on cable



990 €

EMSIS 80 EMS kit

weight **230 g**
size **82 x 82 x 45 mm**
power **140 mA**

The kit consists of:

- Emsis 80
- EMS unit (Daqu/mini Daqu)
- cables

Features:

- sunlight readable display
- low power consumption
- personalized layout
- logbook
- stable attitude during sustained turns (PFD)
- chart support (PFD)
- real-time Engine Monitoring (EMS)
- compatible with several engines (EMS)

Emsis 80 also
available as
DUAL KIT
for 2080 €.

Also available as
PFD/EMS
for 1540 €.



DAQU EMS unit

weight **135 g**
size **125 x 80 x 20 mm**
power **102 mA**

For all engines, up to 6 cylinders.



EMSIS 3.5 is a simple and proven instrument used as **PFD (primary flight display)** or as **EMS (engine monitoring system)** that features bigger display.



1170 €

EMSIS 3.5 PFD kit

weight **312 g**
size **112 x 69 x 65 mm**
power **170 mA**

The kit consists of:

- Emsis 3.5 PFD
- built-in AD-AHRS-GPS module
- cables, GPS antenna and OAT sensor on cable



450 €

MAGU

weight **57 g**
size **62 x 62 x 23 mm**
power **25 mA**

Adds wind indication and true heading.
Nose/tail install available.



1070 €

EMSIS 3.5 EMS kit

weight **235 g**
size **112 x 69 x 45 mm**
power **130 mA**

The kit consists of:

- Emsis 3.5 EMS
- EMS unit (Daqu/mini Daqu)
- cables



mini DAQU EMS unit

weight **82 g**
size **75 x 45 x 30 mm**
power **95 mA**

For engines with ECU (see page 19).

Features:

- sunlight readable display
- low power consumption
- personalized layout
- logbook
- stable attitude during sustained turns (PFD)
- chart support (PFD)
- real-time Engine Monitoring (EMS)
- compatible with several engines (EMS)

Emsis 3.5 also
available as
DUAL KIT
for 2240 €.

Also available as
PFD/EMS
for 1620 €.



AETOS

provides you with crystal clear 7" PFD and reliable EMS.



2590 €

AETOS PFD/EMS kit

weight **700 g**
size **190 x 125 x 40 mm**
power **800 mA**

The kit consists of:

- Aetos (7" display)
- built-in AD-AHRS-GPS module
- EMS unit (Daqu/mini Daqu)
- cables, GPS antenna and OAT sensor on cable

Features:

- sunlight readable display
- energy efficient
- fast multicore processor
- illuminated buttons
- higher screen resolution
- logbook
- Flarm/ADS-B support
- 3D terrain
- Wi-Fi support for METAR and software updates
- USB tethering support for software updates
- NMEA output
- real-time Engine Monitoring (EMS)
- compatible with several engines (EMS)



mini DAQU EMS unit

weight **82 g**
size **75 x 45 x 30 mm**
power **95 mA**

For engines with ECU (see page 19).



DAQU EMS unit

weight **135 g**
size **125 x 80 x 20 mm**
power **102 mA**

For all engines, up to 6 cylinders.

AETOS

www.kanardia.eu



NEW LAYOUT



2190 €

AETOS PFD *kit*

weight 700 g
size 190 x 125 x 40 mm
power 800 mA

The kit consists of:

- Aetos (7" display)
- built-in AD-AHRS-GPS module
- cables, GPS antenna and OAT sensor on cable



1390 €

AETOS *slave*

weight 670 g
size 190 x 125 x 40 mm
power 770 mA



450 €

MAGU

weight 57 g
size 62 x 62 x 23 mm
power 25 mA

Adds wind indication and true heading.
Nose/tail install available.



NESIS 8.4"

The Nesis family of avionics is a self-contained state-of-the-art navigation instrument optimized for ultralight aeroplanes, autogyros and helicopters. All units are lightweight with low power consumption.



3990 €

NESIS III A20 kit

weight 1095 g
size 215 x 175 x 40 mm
power 820 mA

The kit consists of:

- Nesis III (8.4" touch display)
- built-in AD-AHRS-GPS module
- EMS unit (Daqu/mini Daqu)
- cables, GPS antenna and OAT sensor on cable

Features:

- touchscreen, sunlight readable display, energy efficient, fast multicore processor, slim housing
- personalized layout, logbook
- Flarm/ADS-B support, 3D terrain, multiple maps support, Wi-Fi support for METAR, map and software updates, USB tethering support for map and software updates, NMEA output
- real-time Engine Monitoring, compatible with several engines (EMS)
- radio support, integrated video input

- flight planning (see page 17)
- ADS-B GDL 90 support (see page 15)

NEW



mini DAQU EMS unit

weight 82 g
size 75 x 45 x 30 mm
power 95 mA

For engines with ECU (see page 19).



DAQU EMS unit

weight 135 g
size 125 x 80 x 20 mm
power 102 mA

For all engines, up to 6 cylinders.



NESIS 8.4"



2090 €

NESIS *slave*

weight 1045 g
size 215 x 175 x 40 mm
power 800 mA

Nesis
also available as
DUAL KIT
for 6080 €.



450 €

MAGU

weight 57 g
size 62 x 62 x 23 mm
power 25 mA

Adds wind indication and true heading.
Nose/tail install available.



980 €

AUTOPILOT SERVO 6 Nm *kit*

weight 2180 g
size 102 x 64 x 99 mm
power 2 A

Adds autopilot function.

NESIS 7"



Nesis 7" also available as **DUAL KIT for 5540 €**.
Also available as **slave for 1850 €**.

3690 €

NESIS III 7" kit

weight **745 g**
size **190 x 125 x 40 mm**
power **690 mA**

The kit consists of:

- Nesis (7" touch display)
- built-in AD-AHRS-GPS module
- EMS unit (Daqu/mini Daqu)
- cables, GPS antenna and OAT sensor on cable

Features:

- touchscreen, sunlight readable display, energy efficient, fast multicore processor, slim housing
- higher screen resolution, illuminated buttons
- personalized layout, logbook
- Flarm/ADS-B support, 3D terrain, multiple maps support, Wi-Fi support for METAR, map and software updates, USB tethering support for map and software updates, NMEA output
- real-time Engine Monitoring, compatible with several engines (EMS)
- radio support, integrated video input

- flight planning (see page 17)
- ADS-B GDL 90 support (see page 15)

NEW



mini DAQU EMS unit

weight **82 g**
size **75 x 45 x 30 mm**
power **95 mA**

For engines with ECU (see page 19).



DAQU EMS unit

weight **135 g**
size **125 x 80 x 20 mm**
power **102 mA**

For all engines, up to 6 cylinders.

TRAFFIC INFORMATION



Detected aircraft are displayed on the moving map screen.

GDL 90

- Stratux ADS-B
- SkyEcho
- and any other GDL 90 device over Wi-Fi



Device information.



Device warnings and diagnostic.

FLARM

- PowerFLARMs
- AT-1 by AIR Avionics
- Garrecht 1500
- and other FLARM compatible devices



In the case of danger, warning window pops up and stays on display until the threat disappears.
Not available for GDL 90.



Free

KANARDIA MAPS

Vector worldwide maps.
Maps include OFM (open flightmaps) data,
where available.

Local language supported:



49-89 €

DFS MAPS

Germany	Hungary
Holland	Czech Republic
Switzerland	Poland
Austria	Croatia
Belgium	Spain
Denmark	Portugal
Italy	



Free

USA MAPS

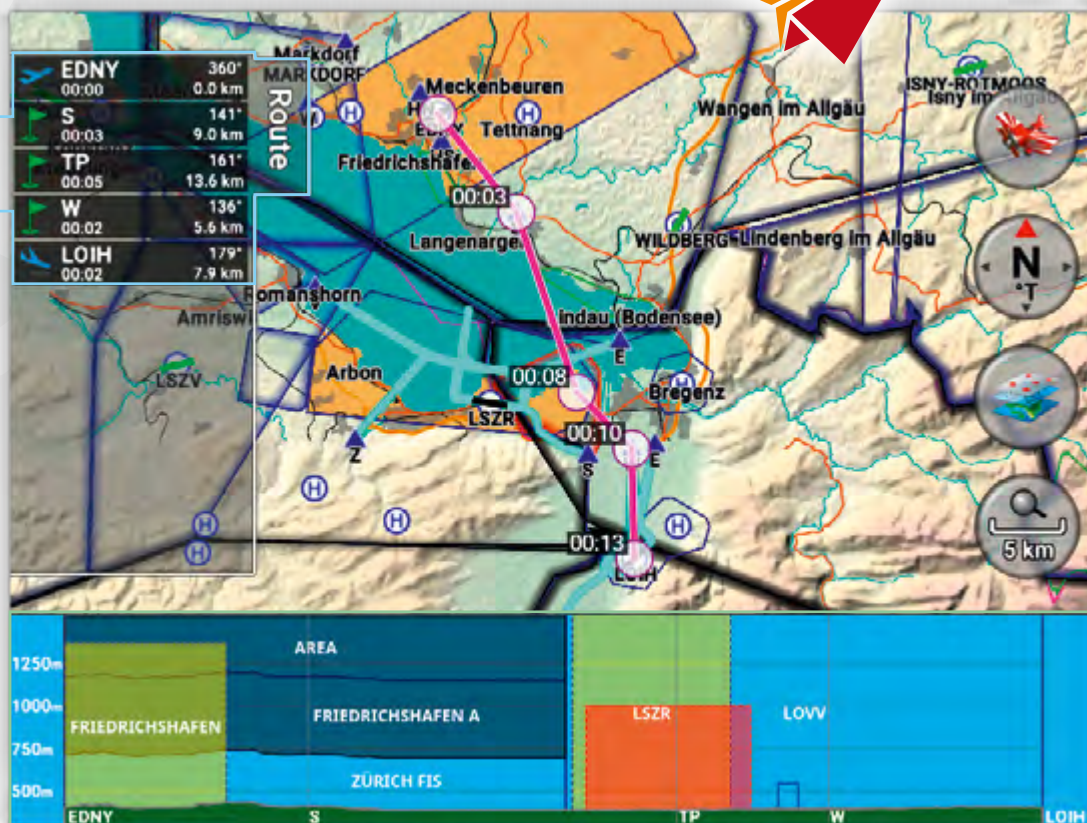
FAA US sectional charts

FLIGHT PLANNING

Simple and intuitive route planning using touch screen.

BRAND NEW

Route
waypoints



Planned
route

Enroute airspace
and terrain



ADDITIONAL HARDWARE ACCESSORIES



490 €

AUTOPILOT SERVO 3 Nm

weight 880 g
size 102 x 64 x 77 mm
power 400 mA

Adds autopilot function for one axis.



490 €

AUTOPILOT SERVO 6 Nm

weight 1090 g
size 102 x 64 x 99 mm
power 600 mA

Adds autopilot function for one axis.



150 €

BOXI controller

weight 95 g
size 74 x 70 x 23 mm
power 25 mA

Controls pitch and roll, electrical trims and radio transmission.



BRAND NEW

200 €

CO sensor

weight 21 g
size 33 x 33 x 19 mm
power 25 mA

CO sensor for early warning of this lethal gas.

690 €

AMIGO autopilot panel

weight 170 g
size 100 x 48 x 30 mm
power 170 mA

Bright, easy to read display and intuitive button arrangement.



300 €

JOYU remote controller

weight 155 g
size 140 x 65 x 45 mm
power 25 mA

Adds remote control capability to your Nesis, Emsis or Aetos. In connection with Boxi it enables trim control.

- user configurable
- improved design

DAQU*is a versatile engine data acquisition unit.*www.kanardia.eu**DAQU** EMS unit

weight **135 g**
 size **125 x 80 x 20 mm**
 power **102 mA**

Daqu measures pressures, temperatures, RPM's, voltages, currents, fuel levels and flows and much more. For all engines up to 6 cylinders.

- support for two engines

**mini DAQU** EMS unit

weight **82 g**
 size **75 x 45 x 30 mm**
 power **95 mA**

mini Daqu obtains most engine implementation data from ECU. In addition, various supplementary sensors can be connected (fuel level, pressures, temperatures, voltages and much more). For modern engines with ECU.

Supported engines:

- Rotax 912iS, 915iS
- Geiger Wankel A2-74
- UL power
- MWfly

Additional features:

- digital RPM output signal for propeller pitch controller
- external switch can be used:
 - for automatic Rotax iS start switch
 - to trigger an external alarm

ACCESSORIES



CHT probe for Rotax 50 €

- temperature probe, VDO (0 to 150 °C/0 to 300 °F)
- 1/8 - 27 NPT thread

For Rotax engines.



CHT probe for Jabiru 50 €

- thermocouple (type J)
- 12 mm ring terminal

For Jabiru engines.



CHT probe for Lycoming 70 €

- thermocouple adjustable bayonet (type J)
- bushing 3/8" - 24, tip 2 1/2" x 3/16"

For Lycoming engines.



OAT digital sensor 40 €

- outside air temperature (OAT) digital sensor



EGT probe for Rotax 50 €

- thermocouple (type K)
- M8x1 screw type

For Rotax engines.



EGT probe for Jabiru 50 €

- thermocouple (type K)
- hose clamp 25/40

For Jabiru engines.



EGT probe for Lycoming 50 €

- thermocouple (type K)
- hose clamp 40/60

For Lycoming engines.



EGT probe for Rotax 50 €

- thermocouple (type K)
- hose clamp 20/32

For Rotax engines.



Fuel pressure sensor 110 €

- active fuel pressure sensor (0 to 1 bar / 0 to 15 psi)
- 1/8 - 27 NPT thread

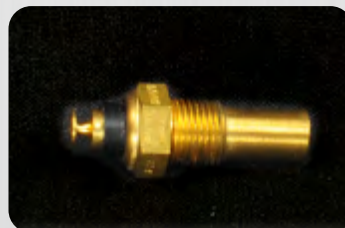
Suitable for carbureted engines.



Oil/fuel pressure sensor 110 €

- active oil pressure sensor (0 to 10 bar / 0 to 145 psi)
- 1/8 - 27 NPT thread

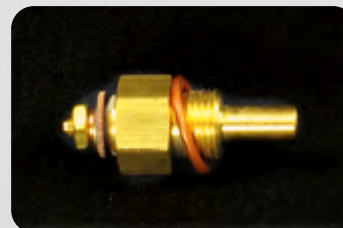
For all engines.



Oil/water temperature sensor 50 €

- oil or water temperature probe, VDO (0 to 150 °C / 0 to 300 °F)
- 1/8 - 27 NPT thread

For Rotax and Jabiru engines.



Oil temperature sensor 50 €

- oil temperature (100 to 150 °C)
- 5/8 - 18 UNF thread

For Lycoming engines.



Red Cube 230 €
Flow Transducer
• fuel flow sensor FT-60
• flow rate: 0.6 to 70+ US GPH
For all engines up to 350 HP.



Temperature sensor 40 €
• PT100
• PT1000



Current transducer 30 A 60 €
• for currents up to ± 30 A



Rotor RPM sensor 50 €
• proximity sensor
• 12 to 24 V DC



UPS-L 200 €
• Lithium-ion battery for currents up to 350 mA
• suitable for one Horis or up to 2 Indus



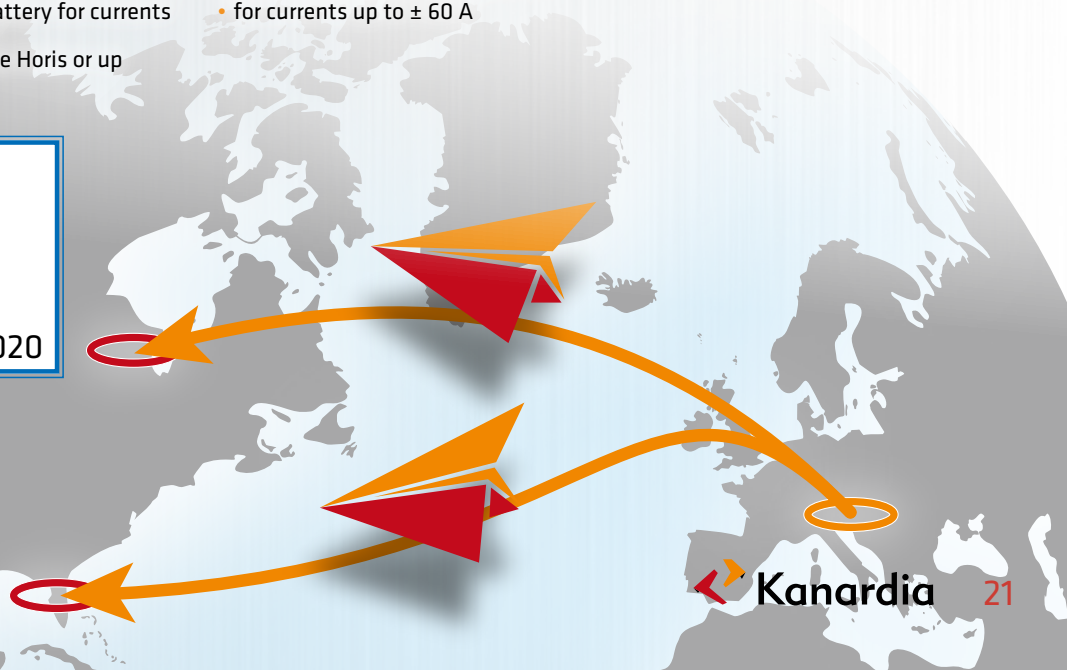
Current transducer 60 A 60 €
• for currents up to ± 60 A



**EAA AIRVENTURE
OSHKOSH
2020**
20th July 2020 – 26th July 2020

**SUN n FUN
AEROSPACE EXPO**

31th March 2020 – 5th April 2020





Kanardia

Flying with attitude **since 2006.**

Kanardia d.o.o.

Lopata 24a • 3000 Celje • Slovenia

+386 40 360 512 • info@kanardia.eu • www.kanardia.eu